



SCAN FOR WEBSITE



Cosgrove

1 PAGE
02

Innovation & Disruption

2 PAGE
03

Message from the CEO

3 PAGE
04

About Cosgrove

Index

4 PAGE
05

Our Locations

5 PAGE
11

Estate Features

6 PAGE
13

Our Homes

Cosgrove

■ Innovation & Disruption

Where Real Estate meets Technology

The brilliance of technology meets the strength of architecture in these smart estates, located at the capital of Africa's powerhouse.

Inspired by the timelessness of design and the innovation of smart home automation, Cosgrove creates homes that shape the future and secure the present.

Message from the CEO.

Welcome to Cosgrove. We are a future-ready company that is disrupting Africa's real estate space.

For two decades, I have worked in the real estate and financial sectors and I have seen them evolve and grow. Presently, everything is changing, and I see it to be a generational change. I have seen game-changing developments such as the Internet of Things, the increased importance of automation, data analytics, and energy management, coupled with a stronger reliance on clean sources of energy, all reshape the way the real estate sector works, and Cosgrove is insistent on remaining at the forefront.

By integrating technology in our residential real estate, we are seeing Africa compete on a level playing field with the rest of the world in innovation and real estate development. Cosgrove is the pioneer in this market, and we have the biggest tech department in the homegrown Nigerian real estate market in terms of automation.

We have seen the Nigerian population increase year after year and are set on ensuring that the housing deficit that has arisen from this growth, is addressed. By putting our strength to the service of the country, Cosgrove is optimistic about the future of Nigeria's real estate industry.

We aim to set the standard and create future-ready and sustainable real estate assets.

The future is here, and it is our pleasure to welcome you to it.

Umar Abdullahi

“

At Cosgrove, we are building much more than just homes. We're building trust.

We believe trust is the foundation of every successful relationship.

Building mutual trust with our partners is at the core of everything we do.

”

About Cosgrove.

Cosgrove is a real estate development and general construction company that develops sustainable smart homes in Africa. We are focused on pioneering the integration of technology and automation into luxury, residential and commercial real estate using sustainable methods. Led by a core team of highly reputable real estate professionals, developers and investors, we are at the forefront of disruption in the real estate industry in Africa.

The companies that own the future are those that look forward, anticipating market needs, trends and technology; using them to create the best products and services. Cosgrove is committed to building homes that are sustainably ready for tomorrow's technology — from simple automation and energy efficiency to full-on smart home capabilities — yet are also aesthetically pleasing and practical in today's world.

The Cosgrove brand is a guarantee of integrity, professionalism and reliability- equal to the best obtainable anywhere in the world.



Our Locations

With a passion for superiority in all our projects, the Cosgrove team is dedicated to delivering value by bringing you beautiful homes with carefully thought-out and functional designs to suit your lifestyle.

We pride ourselves on carefully selected prime locations which make any Cosgrove smart estate an investor's dream offering high returns on investments for both residents and investors.

We offer a wide range of contemporary housing types through all our estates to suit a wide range of customers; from those who want to reside in a modern and sustainable environment at a strategic location within the city of Abuja to those who want to make high yielding property investments within the city.

 **Wuye**

 **Mabushi**

 **Katampe**
by Ministers' Hills,
Maitama

 **Guzape**

 **Wuse 2**



-Cosgrove Smart Estate, Wuye. April 2020

Wuye.

Known for its serenity and good road network, this neighbourhood is home to Cosgrove's pioneer smart estate.

Cosgrove Smart Estate, Wuye, our pioneer project measures 4.32 hectares and consists of 160 housing units.

House types in the estate include:

OAK

5-Bedroom fully detached duplex with 1 maid's room

ACACIA

4-Bedroom terrace with 1 maid's room

MAPLE

3-Bedroom apartment with 1 maid's room

PENTHOUSE

4-Bedroom Luxury penthouse with 1 maid's room



NEARBY LOCATIONS

Estimated Driving Distance



8 MINUTES

TO WUSE 2



10 MINUTES

TO SILVERBIRD GALLERIA



28 MINUTES

TO AIRPORT



7 MINUTES

TO DIPLOMATIC DRIVE

Mabushi.

West of the city center lies this lush and green neighbourhood.

Cosgrove Smart Estate, Mabushi measures 0.834 hectares and consists of 22 housing units. It is located in a serene environment with quick and easy access to the Shehu Yar'adua way and the Nnamdi Azikiwe Express way.

House types in the estate include:

OAK

5-Bedroom fully detached duplex with 1 maid's room

ACACIA

4-Bedroom terrace with 1 maid's room



NEARBY LOCATIONS

Estimated Driving Distance



4 MINUTES

JABI LAKE MALL



7 MINUTES

NEXT CASH & CARRY



2 MINUTES

BLU CABANA RESTAURANT & CAFE



35 MINUTES

AIRPORT



9 MINUTES

TO CENTRAL AREA

Katampe.

By Ministers' Hills Maitama

Known as the geographical midpoint of Nigeria, Katampe offers a breathtaking view of the capital city.

Cosgrove Smart Estate, Katampe is strategically located by Ministers' Hills, Maitama. An easy admission to the Nnamdi Azikiwe Highway via the 1.5km access road built by Cosgrove makes living in this location super convenient for getting to other major parts of the Abuja town.

Measuring a total of approximately 38 hectares- Phase 1 being 11.9 hectares and Phase 2 being 23 hectares with an additional dedicated 2.99 hectares for recreational facilities, this project consists of a wide range of house types which include:

- **VILLA**
7-Bedroom gated villa with maids' quarters
- **ACACIA**
4-Bedroom terrace with 1 maid's room
- **OAK**
5-Bedroom fully detached duplex with 1 maid's room
- **MAPLE**
3-Bedroom apartment with 1 maid's room
- **OAKVILLE**
5-Bedroom semi-detached duplex with 1 maid's room
- **PENTHOUSE**
4-Bedroom Luxury penthouse with 1 maid's room



NEARBY LOCATIONS

Estimated Driving Distance



30 MINUTES

TO AIRPORT



8 MINUTES

TO CENTRAL AREA



9 MINUTES

TO SPAR SUPERMARKET,
WUSE 2



15 MINUTES

TO TRANSCORP HILTON



10 MINUTES

TO EAGLE SQUARE

Guzape.

Wake up to the sight of nature in this green and hilly neighbourhood.

A small but highly luxurious estate of just 5 units of 7-Bedroom gated VILLAS with swimming pools located in the highbrow area of Guzape.



NEARBY LOCATIONS

Estimated Driving Distance



35 MINUTES

TO AIRPORT



10 MINUTES

TO GRAND SQUARE
SUPERMARKET, CENTRAL AREA



1 MINUTE

TO CHANNELS TV



10 MINUTES

TO TRANSCORP HILTON



9 MINUTES

TO ECOWAS SECRETARIAT,
ASOKORO

Wuse 2.

Located in the north-western part of Abuja, and home to some of the city's liveliest spots, Wuse 2 is considered the heartbeat of Abuja.

Located in the center of Abuja, the Cosgrove Estate, Wuse 2 features 12 units of SCARLET OAK — a 5-Bedroom townhouse with 1 maid's room. Surrounded by well laid infrastructure and located amidst numerous amenities this estate makes living here smooth and hustle free.



NEARBY LOCATIONS

Estimated Driving Distance



2 MINUTES

WALK FROM **EXCLUSIVE SUPERMARKET** (INCLUDING BAKERY, PHARMACY, CAFE)



30 MINUTES

TO AIRPORT



5 MINUTES

TO CENTRAL AREA



5 MINUTES

TO WAKKIS FOOD, AMINU KANO, WUSE 2

Estate Features



Your luxury does not have to come at the expense of comfortable and safe living. This is why we have designed our estate features to give you the best of contemporary smart living. At Cosgrove smart estate, you have the following to look forward to:

- **Security first:** Enjoy peace of mind with our cutting-edge security systems.
- **Stay healthy:** Keep your body looking and feeling its best at our gym.
- **Relax and enjoy:** Our pools for adults and kids make for the perfect family time.
- **Fun happens here:** Take a break with our recreational area.
- **Smart home, smart life:** The luxury of convenience, the comfort of home.

NOTE: Availability of listed features depends on the size of the estate.

Estate Features.



Central Security Control Hub with state-of-the-art Artificial Intelligence security surveillance system¹



Fiber-to-the-home (FTTH)²



Smart Street Lights



Swimming Pool & Gym



Uninterrupted (Treated) Water Supply



Playground & Greenery



World Class Utilities & Facilities Management Services



Uninterrupted power supply (with auto changeover)



Commercial Hub

¹ The Central Security Control Hub also features • Facial recognition • Automatic Number Plate Recognition • Pedestrian biometric access control • Motion sensors • Security alarm

² Full fiber optics cabling infrastructure

Our Homes



With a blend of aesthetics and functionality, our homes reflect a commitment to creating real estate that defies convention and is sustainably future-ready.

Villa

7-Bedroom
Gated Villa

Oak

5-Bedroom Fully
Detached Duplex

Oakville

5-Bedroom Semi-
Detached Duplex

Acacia

4-Bedroom
Terrace

Scarlet Oak

5-Bedroom
Townhouse

Maple

3-Bedroom
Apartments

Penthouse

4-Bedroom Luxury
Penthouse


NOTE: All house types feature one maid's room in addition to the listed number of bedrooms.



Villa.

7-Bedroom Gated Villa

The Villas are located at:

-  Katampe
-  Guzape

Read More 

Villa.

7-Bedroom Gated Villa



7 BEDROOMS



6-CAR PARKING



HOME
AUTOMATION



SPORTS
FACILITIES



UNINTERRUPTED
POWER SUPPLY



HIGH TECH
SECURITY &
SURVEILLANCE

This luxurious future-ready gated villa is a state-of-the-art home with a built-up area of 617m². The gorgeous helical staircase welcomes you in to the tasteful masterpiece. It features three living areas – two lounges and an expansive living area on the ground floor with a view of the swimming pool. The house has two additional lounges, two expansive balconies, 1-bedroom boy's quarters and 6 car parking Space.

Other features are:

- Fully pre-wired smart home features (home owners simply connect or upgrade as preferred).
- Fiber-to-the-home (FTTH)
- High tech security with biometric access control.
- Uninterrupted power supply
- Central water heating
- Central air conditioning (optional)
- Individually & centrally controlled 24-Hour CCTV with Artificial Intelligence (AI) capabilities

Fixtures and Fittings (e.g kitchen cabinets, wardrobes, walk-in closets, etc.) not included in total house cost.

Contact our Customer Service for more detailed information on making preferred selections for the fixtures and fittings in your home.

Villa.

7-Bedroom Gated Villa

FLOOR PLANS



Ground Floor Plan.



First Floor Plan.



Oak.

5-Bedroom Fully Detached Duplex

The Oak Houses are located at:

- 📍 Wuye
- 📍 Mabushi
- 📍 Katampe

Read More [→](#)

Oak.

5-Bedroom Fully Detached Duplex



5 BEDROOMS



5-CAR PARKING



HOME
AUTOMATION



SPORTS
FACILITIES



UNINTERRUPTED
POWER SUPPLY



HIGH TECH
SECURITY &
SURVEILLANCE

This finely balanced and spacious home features three living areas with 5 all en-suite bedrooms and the space for two walk-in closets. It has living areas on all three floors with an additional multi-purpose area configurable for gym/home/ cinema/study. It comes with an expansive kitchen, a maid's room, and a 5-car parking space. It has a built-up area of 462m².

Other features are:

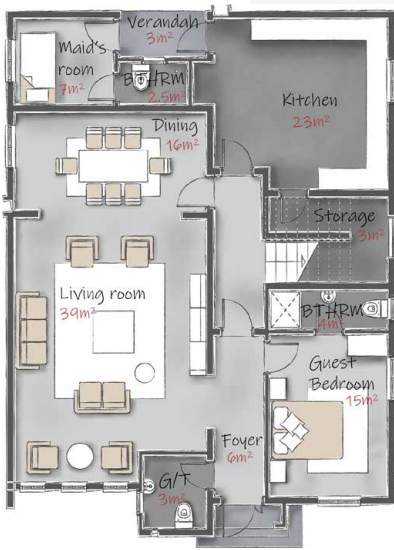
- Fully pre-wired smart home features (home owners simply connect or upgrade as preferred)
- Fiber-to-the-home (FTTH)
- High tech security with biometric access control
- Uninterrupted power supply
- Central water heating
- Central air conditioning (optional)
- Individually & centrally controlled 24-Hour CCTV with Artificial Intelligence (AI) capabilities

Fixtures and Fittings (e.g kitchen cabinets, wardrobes, walk-in closets, etc.) not included in total house cost. Contact our Customer Service for more detailed information on making preferred selections for the fixtures and fittings in your home.

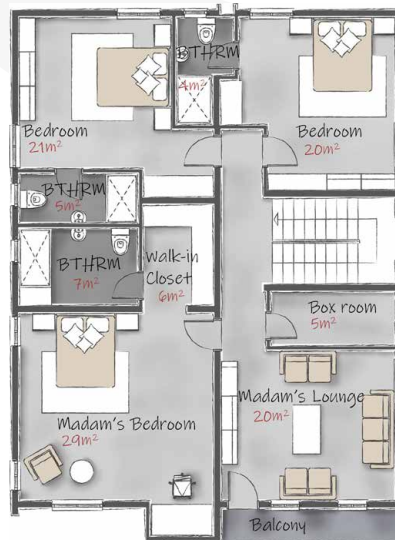
Oak.

5-Bedroom Fully Detached Duplex

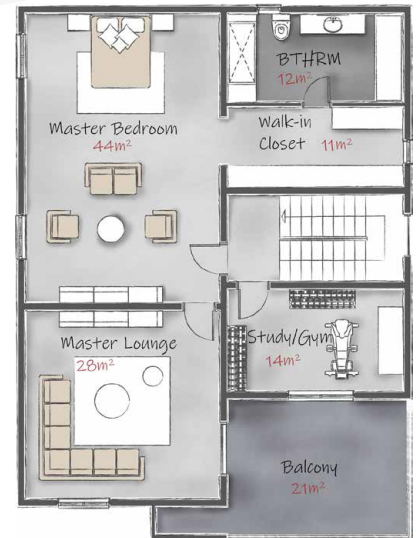
FLOOR PLANS



Ground Floor.



First Floor.



Second Floor.



Oakville.

5-Bedroom Semi-Detached Duplex

The Oakville Houses are located at:

 Katampe

Read More 

Oakville.

5-Bedroom Semi-Detached Duplex



5 BEDROOMS



5-CAR PARKING



HOME
AUTOMATION



SPORTS
FACILITIES



UNINTERRUPTED
POWER SUPPLY



HIGH TECH
SECURITY &
SURVEILLANCE

A contemporary family home. It has two living areas and 5 all en-suite bedrooms with two walk-in closets. It also features a maid's room and a 5-car parking space with a built-up area of 365m².

Other features are:

- Fully pre-wired smart home features (home owners simply connect or upgrade as preferred)
- Fiber-to-the-home (FTTH)
- High tech security with biometric access control
- Uninterrupted power supply
- Central water heating
- Central air conditioning (optional)
- Individually & centrally controlled 24-Hour CCTV with Artificial Intelligence (AI) capabilities

Fixtures and Fittings (e.g kitchen cabinets, wardrobes, walk-in closets, etc.) not included in total house cost.

Contact our Customer Service for more detailed information on making preferred selections for the fixtures and fittings in your home.

Oakville.

5-Bedroom Semi-Detached Duplex

FLOOR PLANS



Ground Floor.



First Floor.



Second Floor.



Scarlet Oak.

5-Bedroom Townhouse

The Scarlet Oak Houses are located at:

 Wuse 2

Read More 

Scarlet Oak.

5-Bedroom Townhouse



5 BEDROOMS



4-CAR PARKING



HOME
AUTOMATION



SPORTS
FACILITIES



UNINTERRUPTED
POWER SUPPLY



HIGH TECH
SECURITY &
SURVEILLANCE

Truly stunning to behold, this 5-bedroom future-ready townhouse features a master bedroom, four spacious bedrooms, an exquisite courtyard and two living areas. All bedrooms are en-suite and equipped with high-quality bathrooms. This property also features a maid's room and a built up area of 449m².

Other features are:

- Fully pre-wired smart home features (home owners simply connect or upgrade as preferred)
- Fiber-to-the-home (FTTH)
- High tech security with biometric access control
- Walk-in Closet (excluding guest room)
- Uninterrupted power supply
- Central water heating
- Central air conditioning (optional)
- Individually & centrally controlled 24-Hour CCTV with Artificial Intelligence (AI) capabilities

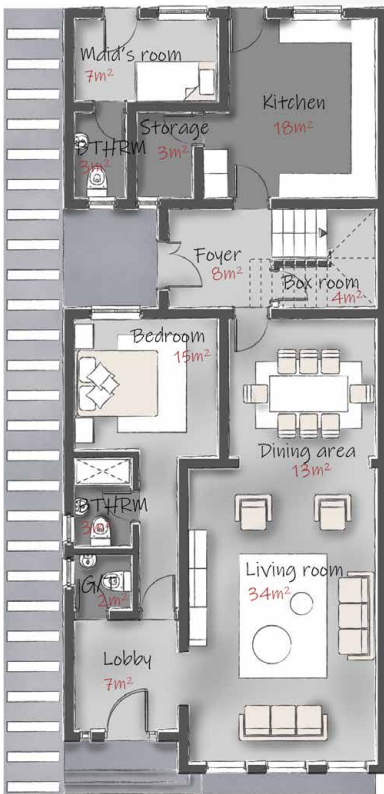
Fixtures and Fittings (e.g kitchen cabinets, wardrobes, walk-in closets, etc.) not included in total house cost.

Contact our Customer Service for more detailed information on making preferred selections for the fixtures and fittings in your home.

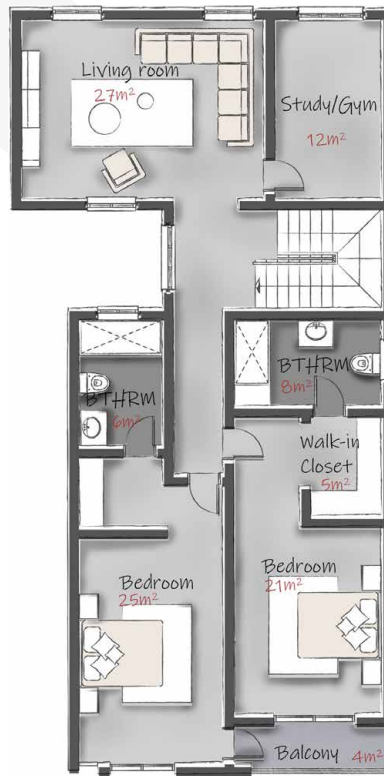
Scarlet Oak.

5-Bedroom Townhouse

FLOOR PLANS



Ground Floor.



First Floor.



Second Floor.



Acacia.

4-Bedroom Terrace

The Acacia Houses are located at:

-  Wuye
-  Mabushi
-  Katampe

Read More 

Acacia.

4-Bedroom Terrace



4 BEDROOMS



3-CAR PARKING



HOME
AUTOMATION



SPORTS
FACILITIES



UNINTERRUPTED
POWER SUPPLY



HIGH TECH
SECURITY &
SURVEILLANCE

This is a functional 4-bedroom terrace sitting on a built-up area of 284m². It offers two living areas, a spacious master bedroom and three other bedrooms — all en-suite. It also offers a 3-car parking space & a maid's room.

Other features are:

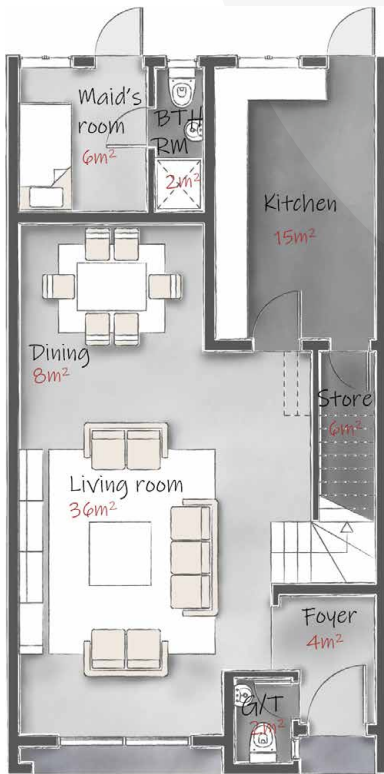
- Fully pre-wired smart home features (home owners simply connect or upgrade as preferred)
- Fiber-to-the-home (FTTH)
- High tech security with biometric access control
- Uninterrupted power supply
- Central water heating
- Central air conditioning (optional)
- Individually & centrally controlled 24-Hour CCTV with Artificial Intelligence (AI) capabilities

Fixtures and Fittings (e.g kitchen cabinets, wardrobes, walk-in closets, etc.) not included in total house cost. Contact our Customer Service for more detailed information on making preferred selections for the fixtures and fittings in your home.

Acacia.

4-Bedroom Terrace

FLOOR PLANS



Ground Floor.



First Floor.





Second Floor.



Maple.

3-Bedroom Apartment
4-Bedroom Luxury Penthouse

The Maple Houses are located at:

-  Wuye
-  Katampe

Read More 

Maple.

3-Bedroom Apartment



3 BEDROOMS



2-CAR PARKING



HOME
AUTOMATION



SPORTS
FACILITIES



UNINTERRUPTED
POWER SUPPLY



HIGH TECH
SECURITY &
SURVEILLANCE

This stunning building offers 3-bedroom apartments, each of which features an optimally laid out living area, a master bedroom and two other bedrooms all en-suite. It has a maid's room and each apartment sits on a built-up area of 189m².

Other features are:

- Fully pre-wired smart home features (home owners simply connect or upgrade as preferred)
- Fiber-to-the-home (FTTH)
- High tech security with biometric access control
- 24-hour uninterrupted power supply
- Central water heating
- Central air conditioning (optional)
- Individually & centrally controlled 24-hour CCTV with Artificial Intelligence (AI) capabilities
- Service elevator

Fixtures and Fittings (e.g kitchen cabinets, wardrobes, walk-in closets, etc.) not included in total house cost.

Contact our Customer Service for more detailed information on making preferred selections for the fixtures and fittings in your home.

Maple.

3-Bedroom Apartment

FLOOR PLANS



Penthouse Floor Plan.

Penthouse.

4-Bedroom Luxury Penthouse



4 BEDROOMS



2-CAR PARKING



HOME
AUTOMATION



SPORTS
FACILITIES



UNINTERRUPTED
POWER SUPPLY



HIGH TECH
SECURITY &
SURVEILLANCE

This Penthouse has set a new benchmark for apartment living. It has four bedrooms, a large living area and an expansive corridor. The penthouse offers a large terrace measuring 113m² and the entire apartment has a built-up area of 378m². It has an additional multi-purpose area configurable for gym/study/home cinema, a maid's room and designated parking for 2 cars.

Other features are:

- Fully pre-wired Smart home Features (Home owners simply Connect or Upgrade as preferred)
- Fiber-to-the-home (FTTH)
- High tech security with biometric access control
- Uninterrupted power supply
- Central water heating
- Central air conditioning (optional)
- Individually & centrally controlled 24-Hour CCTV with Artificial Intelligence (AI) capabilities
- Service elevator

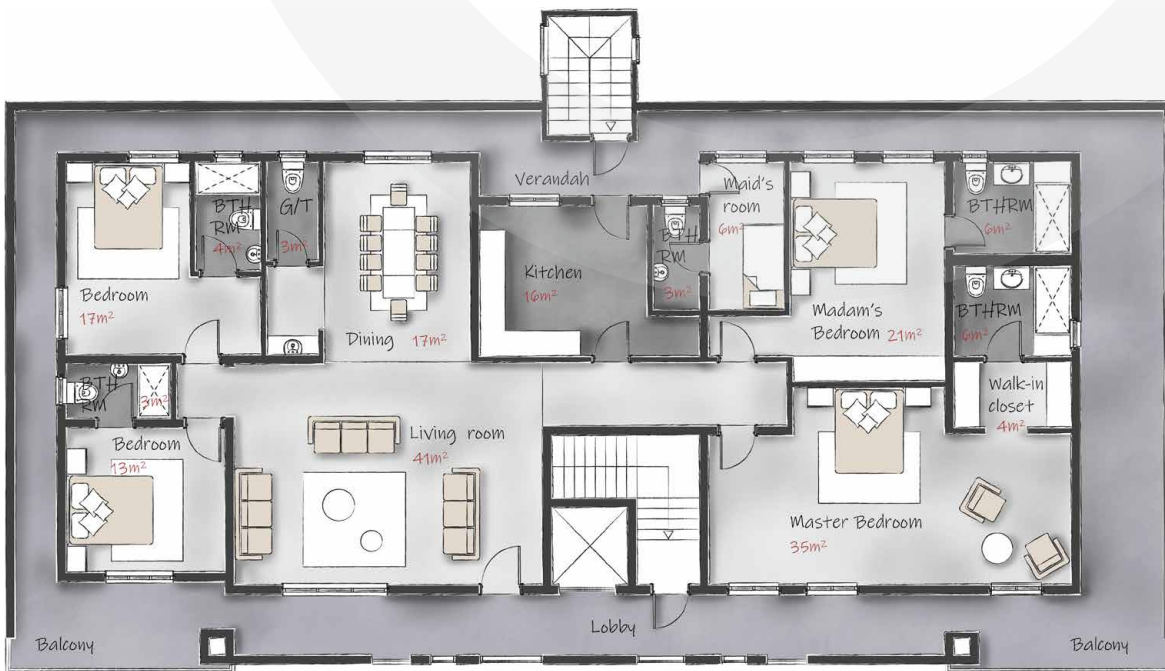
Fixtures and Fittings (e.g kitchen cabinets, wardrobes, walk-in closets, etc.) not included in total house cost.

Contact our Customer Service for more detailed information on making preferred selections for the fixtures and fittings in your home.

Penthouse.

4-Bedroom Luxury Penthouse

FLOOR PLANS



Penthouse Floor Plan.



Cosgrove

Real Estate | Investment | Technology

PERSONAL DETAILS

(PLEASE READ CAREFULLY AND COMPLETE THE FORM IN BLOCK LETTERS)

Mr. Mrs. Miss. Others _____

Surname

First name

Other names

Date of birth (dd/mm/yy)

Phone Number

Nationality

Email

Address

Driver's License

International Passport

Voter's card

National ID

ID Number _____

Marital Status _____

NEXT OF KIN

Address _____

Phone Number _____

Email _____

Preferred Location Wuye Mabushi Guzape Wuse 2 Katampe by Ministers' Hill

****Wuye, Mabushi, Guzape & Wuse II sold out, available only in secondary market**

HOUSE TYPE (Mark as Appropriate)

VILLA 7 BEDROOM GATED VILLA

OAK 5 BEDROOM DETACHED DUPLEX

SCARLET OAK 5 BEDROOM FULLY DETACHED DUPLEX (**Wuse II only**)

OAKVILLE 5 BEDROOM SEMI-DETACHED DUPLEX

ACACIA 4 BEDROOM TERRACE DUPLEX

PENTHOUSE 4 BEDROOM LUXURY PENTHOUSE

with elevator

MAPLE 3 BEDROOM APARTMENT

with elevator

Number of Unit(s) _____

DESIRED PAYMENT PLAN

Lump Sum 12 months plan (30% | 30% | 20% | 20%)

***120 days between each payment**

16 months plan (20% | 20% | 20% | 20% | 20%)

***120 days between each payment**

HOW DID YOU FIND OUT ABOUT US

Website Media Newsletter Agent (Name) _____

Applicant Signature _____

Date _____



4th Floor,
Mukhtar El Yakub Place,
Zakariyya Maimalari Street,
Central Business District, Abuja

+234 906 000 1552
+234 906 000 1553

info@cosgrove.com.ng

www.cosgrove.com.ng